

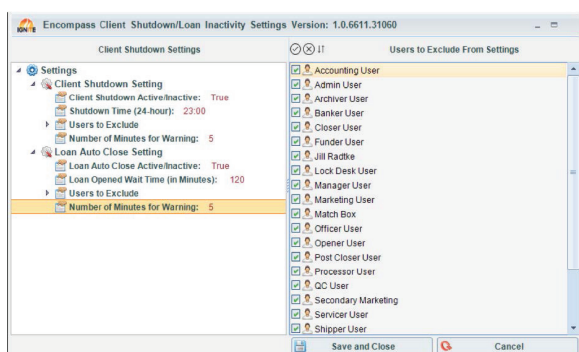
SESSION MANAGER TOOL



PEOPLE SITTING IN FILES TOO LONG OR OVERNIGHT?

Ignite's Shut-It Down application allows lenders and admins to control both how long users can idly occupy files and what time users are working on files.

The application provides a dual set of controls: one to programmatically warn and exit users from loan files after a pre-set number of minutes (e.g. 60 minutes), and the other to programmatically log users out of Encompass at a pre-set time of the day (e.g. 10pm). It's time to improve upon overall user experience, productivity reports, overtime restrictions, locked/ occupied files, system updates, and IT applications.



SESSION MANAGER HIGHLIGHTS INCLUDE

- The timer setting is based on the user's PC rather than a defined time-zone
- The user will be provided a warning (e.g. 5 minutes) prior to the application running with text asking them if they are still working on the file and reminding them to save any work
- Provides an admin UI to control all settings
- Settings are saved on a user basis so particular users can be excluded from the programs if necessary
- Files will not be autosaved to protect data integrity
- Allows lenders to proactively protect against users who 'sit' in files for long periods of time, overnight or over a weekend
- Allows lenders to protect against employees working after hours

FOR MORE INFORMATION, OR TO SCHEDULE A DEMO CONTACT:

Frank Fiore - Vice President ■ t: 516.802.7170 ■ c: 516.236.6711